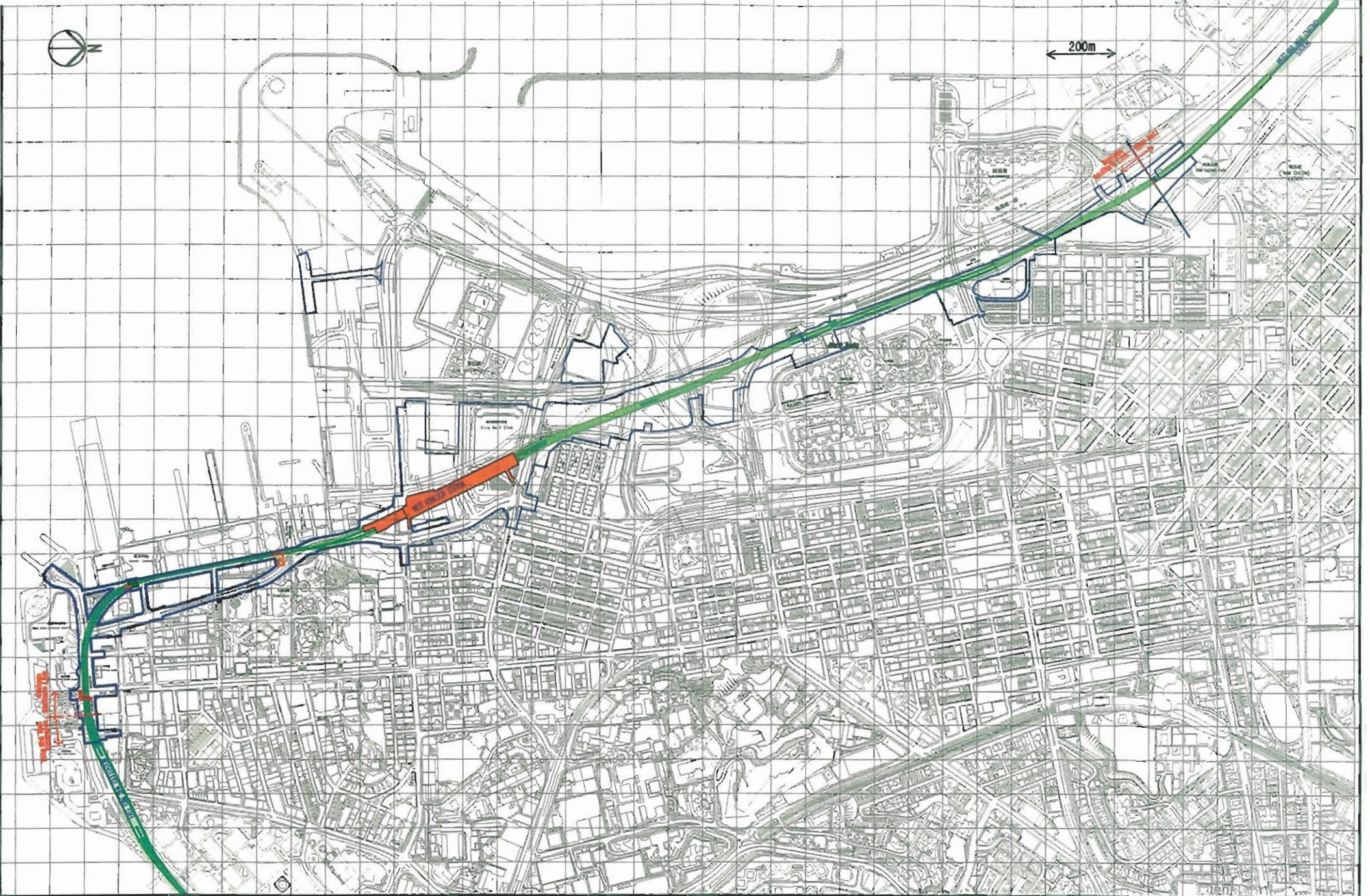


Map reproduced with permission of The Director of Lands, The Hong Kong Government.

FILENAME: G:\m\proj\133073\ar\enhp\133073-ar-181-V8-CAN\133073-ar-181-V8-CAN.dwg



REV	DATE	BY	SUB	APP	DESCRIPTION

REV	DATE	BY	SUB	APP	DESCRIPTION

DESIGNED BY	SW
DRAWN BY	RL
CHECKED BY	FC
IN CHARGE	ST
DATE	11 JUNE 2003

New Railway Projects
新鐵路策劃

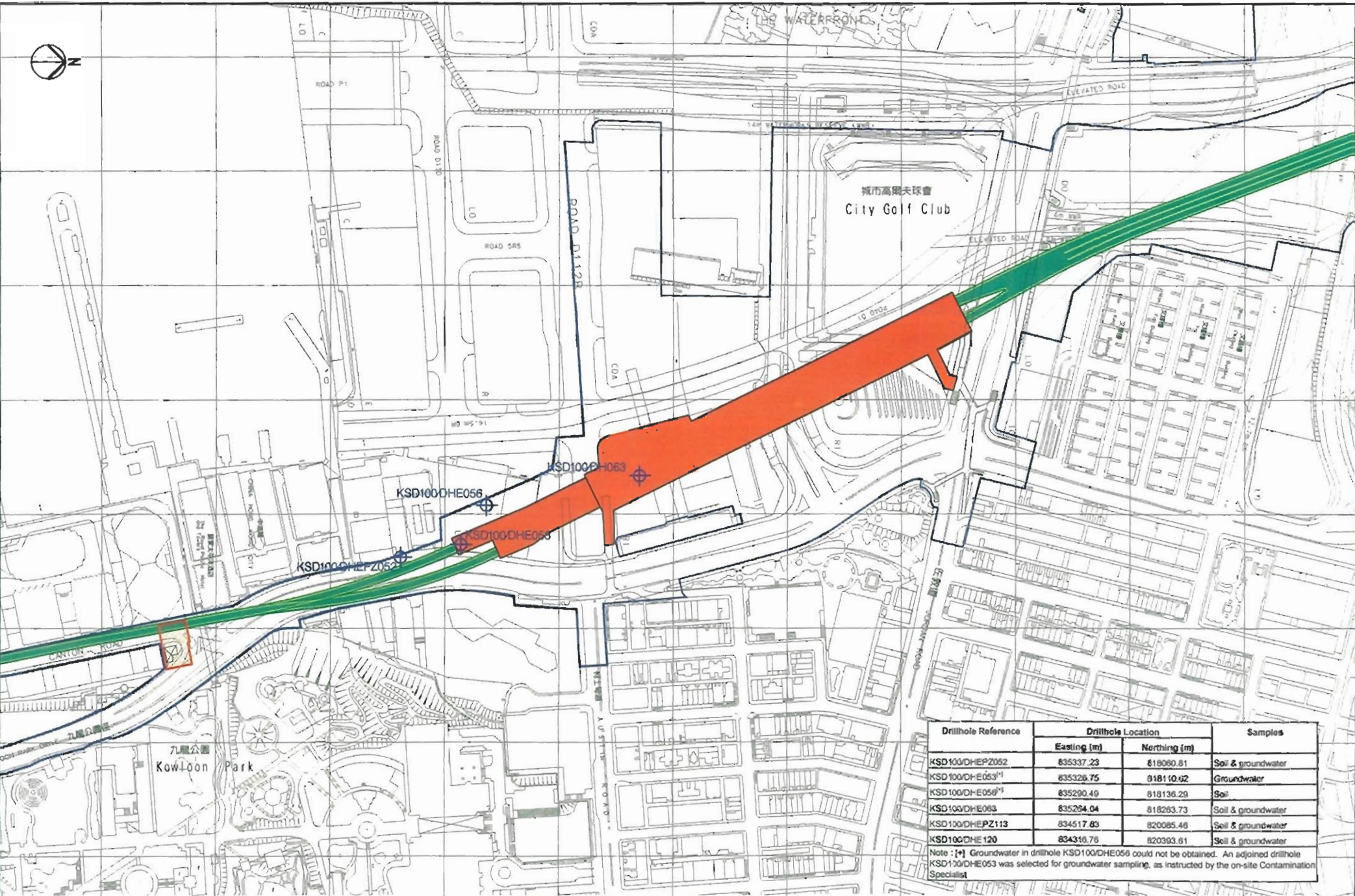
Ove Arup & Partners Hong Kong Limited **ARUP**

KOWLOON SOUTHERN LINK KSL GSA-5100
ETA & ASSOCIATED SERVICES

GENERAL ALIGNMENT

DATE	11 JUNE 2003
SCALE	1 : 10000 @ A3
DRAWING NUMBER	FIGURE 1
SHEET NO.	STAGE 0001 REV
	P C

Map reproduced with permission of The Director of Lands. (C) Hong Kong Government.



Drillhole Reference	Drillhole Location		Samples
	Easting (m)	Northing (m)	
KSD100DHEPZ052	835337.23	818060.81	Soil & groundwater
KSD100DHE053 ⁽¹⁾	835326.75	818110.02	Groundwater
KSD100DHE058 ⁽¹⁾	835290.49	818136.20	Soil
KSD100DHE063	835264.04	818263.73	Soil & groundwater
KSD100DHEPZ113	834517.63	820085.46	Soil & groundwater
KSD100DHE120	834316.78	820393.81	Soil & groundwater

Note: (1) Groundwater in drillhole KSD100DHE058 could not be obtained. An adjoining drillhole KSD100DHE053 was selected for groundwater sampling, as instructed by the on-site Contamination Specialist.

REV	DATE	BY	SUB	APP	DESCRIPTION
1	31 JUN 2005	RL	FC	ST	CONTAMINATION ASSESSMENT REPORT
2	12 OCT 2005	RL	FC	ST	CONTAMINATION ASSESSMENT PLAN
3	20 JUL 2007	RL	FC	ST	LAND CONTAMINATION WORKING PAPER

DESIGNED BY SW
 DRAWN BY RL
 CHECKED BY FC
 IN CHARGE ST
 DATE 11 JUNE 2007

KCR New Railway Projects
 新鐵路策劃

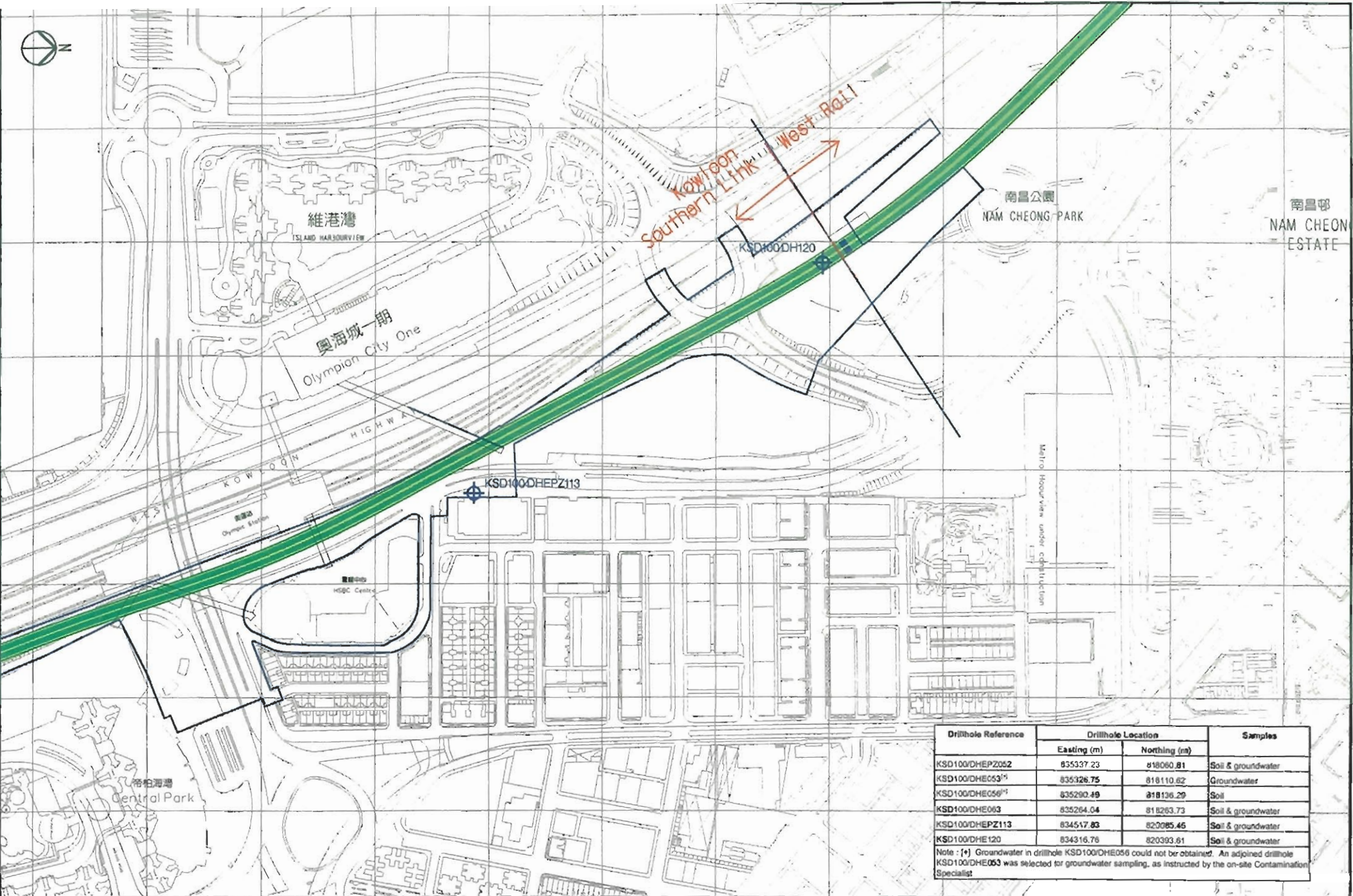
Ove Arup & Partners Hong Kong Limited **ARUP**

KOWLOON SOUTHERN LINK KSL GSA-5100
 ETA & ASSOCIATED SERVICES

LAND CONTAMINATION SAMPLING LOCATIONS

SCALE 1:2,000 @ A3
 SHEET NUMBER
FIGURE 2
 SHEET NO. 1 OF 2
 STACK CODE (REV) P C

Maps reproduced with permission of The Director of Lands. (C) Hong Kong Government.
 © 2003 ARUP. All rights reserved.



Drillhole Reference	Drillhole Location		Samples
	Easting (m)	Northing (m)	
KSD100/DHEPZ002	835337.23	818060.81	Soil & groundwater
KSD100/DHE053 ^(*)	835326.75	818110.82	Groundwater
KSD100/DHE056 ^(*)	835290.49	818136.29	Soil
KSD100/DHE063	835264.04	818263.73	Soil & groundwater
KSD100/DHEPZ113	834517.83	820085.46	Soil & groundwater
KSD100/DHE120	834316.76	820393.61	Soil & groundwater

Note: (*) Groundwater in drillhole KSD100/DHE056 could not be obtained. An adjoined drillhole KSD100/DHE063 was selected for groundwater sampling, as instructed by the on-site Contamination Specialist.

REV	DATE	BY	SUB	APP	DESCRIPTION
1	11 JUN 2003	RL	FC	ST	CONTAMINATION ASSESSMENT REPORT
2	17 OCT 2002	RL	FC	ST	CONTAMINATION ASSESSMENT PLAN
3	30 JUL 2002	RL	FC	ST	LAND CONTAMINATION WORKING PAPER

DESIGNED BY: SW
 DRAWN BY: RL
 CHECKED BY: FC
 IN CHARGE: ST
 DATE: 11 JUNE 2003



New Railway Projects
新鐵路策劃

Ove Arup & Partners Hong Kong Limited ARUP

KOWLOON SOUTHERN LINK KSL GSA-5100
EIA & ASSOCIATED SERVICES

LAND CONTAMINATION SAMPLING LOCATIONS

SCALE: 1:2500 @ A2
 SHEET NO: 2 OF 2
 STAGE CODE: P C

FIGURE 2
 DATE: 11 JUNE 2003

